

# \$647,900 - 147 Webster Drive, Red Deer

MLS® #A2216654

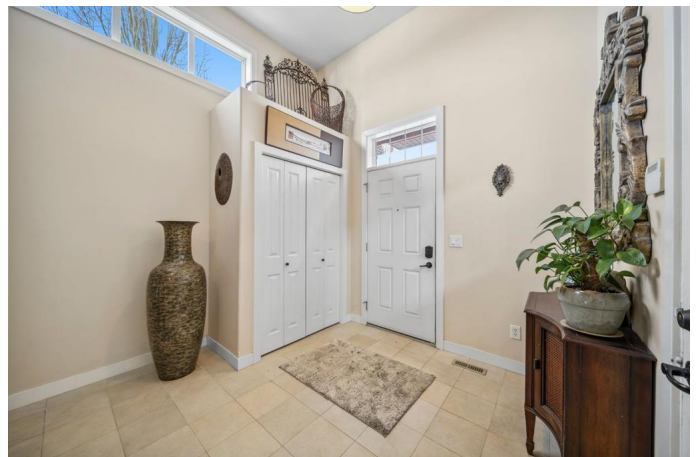
**\$647,900**

5 Bedroom, 3.00 Bathroom, 1,581 sqft

Residential on 0.14 Acres

Westlake, Red Deer, Alberta

STUNNING 5 BEDS, 3 BATHS MODIFIED BI-LEVEL IN PRESTIGIOUS WESTLAKE – A MUST SEE! From the moment you step inside, you™ll be impressed by the spacious FRONT ENTRY that opens into a beautiful OPEN CONCEPT MAIN FLOOR with soaring VAULTED CEILINGS. This inviting layout features a right LIVING ROOM and DINNING AREA, plus a spacious KITCHEN with ample cabinetry, stainless steel appliances, stylish backsplash, granite countertops, a corner pantry, and a large island – perfect for cooking and entertaining. The private MASTER BEDROOM is located above the garage and includes a luxurious 5-piece SPA-LIKE ENSUITE with a corner soaker tub, separate shower, and a walk-in closet. TWO ADDITIONAL BEDROOMS and a 4-piece BATHROOM complete the main level. The FULLY FINISHED BASEMENT offers even more living space with a large, bright FAMILY ROOM, TWO MORE BEDROOMS (one ideal for a home office, gym, or den), another 3-piece BATHROOM, a KITCHENETTE with wine fridge, LAUNDRY & MECHANICAL ROOM, and a stunning three-sided gas fireplace. The basement also features rough-in for in-floor heat. Step outside into the LOW MAINTENANCE, FULLY FENCED & LANDSCAPED BACKYARD, complete with a LARGE DECK (perfect for summer entertaining), a SECOND DECK, POND, and FIRE PIT PATIO. The 24x22 insulated DOUBLE ATTACHED GARAGE



offers plenty of space and functionality. Recent upgrades include a newer furnace, NEW SHINGLES ON BOTH THE HOUSE & THE GARAGE ( OCT/2024) , and on-demand hot water for added efficiency and peace of mind. Ideally located close to all south-side amenities, you're just minutes from downtown Red Deer, South Hill, Red Deer Polytechnic, Heritage Ranch, and Highway 2. Enjoy the nearby walking trails and the natural beauty that surrounds this exceptional community. Donâ€™t miss your chance to make this fabulous property your NEW HOME â€“ book your showing today!

Built in 2008

**Essential Information**

|                |             |
|----------------|-------------|
| MLS® #         | A2216654    |
| Price          | \$647,900   |
| Bedrooms       | 5           |
| Bathrooms      | 3.00        |
| Full Baths     | 3           |
| Square Footage | 1,581       |
| Acres          | 0.14        |
| Year Built     | 2008        |
| Type           | Residential |
| Sub-Type       | Detached    |
| Style          | Bi-Level    |
| Status         | Active      |

**Community Information**

|             |                   |
|-------------|-------------------|
| Address     | 147 Webster Drive |
| Subdivision | Westlake          |
| City        | Red Deer          |
| County      | Red Deer          |
| Province    | Alberta           |
| Postal Code | T4N 7G6           |

**Amenities**

|                |  |
|----------------|--|
| Parking Spaces | 4  |
| Parking        | Double Garage Attached, Garage Door Opener |
| # of Garages   | 2  |

## Interior

|                   |   |
|-------------------|---|
| Interior Features | Bar, Granite Counters, High Ceilings, Kitchen Island        |
| Appliances        | Dishwasher, Microwave, Refrigerator, Stove(s), Washer/Dryer |
| Heating           | Forced Air, Natural Gas                                     |
| Cooling           | None  |
| Fireplace         | Yes   |
| # of Fireplaces   | 1   |
| Fireplaces        | Gas, Three-Sided  |
| Has Basement      | Yes   |
| Basement          | Finished, Full  |

## Exterior

|                   |  |
|-------------------|--|
| Exterior Features | Fire Pit   |
| Lot Description   | Back Lane, Back Yard, Corner Lot, Garden, Landscaped, Gazebo |
| Roof              | Asphalt Shingle  |
| Construction      | Vinyl Siding, Wood Siding                                    |
| Foundation        | Poured Concrete  |

## Additional Information

|                |               |
|----------------|---------------|
| Date Listed    | May 1st, 2025 |
| Days on Market | 14            |
| Zoning         | R1            |

## Listing Details

|                |            |
|----------------|------------|
| Listing Office | eXp Realty |
|----------------|------------|

Data is supplied by Pillar 9â„¢ MLS® System. Pillar 9â„¢ is the owner of the copyright in its MLS® System. Data is deemed reliable but is not guaranteed accurate by Pillar 9â„¢. The trademarks MLS®, Multiple Listing Service® and the associated logos are owned by The Canadian Real Estate Association (CREA) and identify the quality of services provided by real estate professionals who are members of CREA. Used under license.